

4

3

2

1

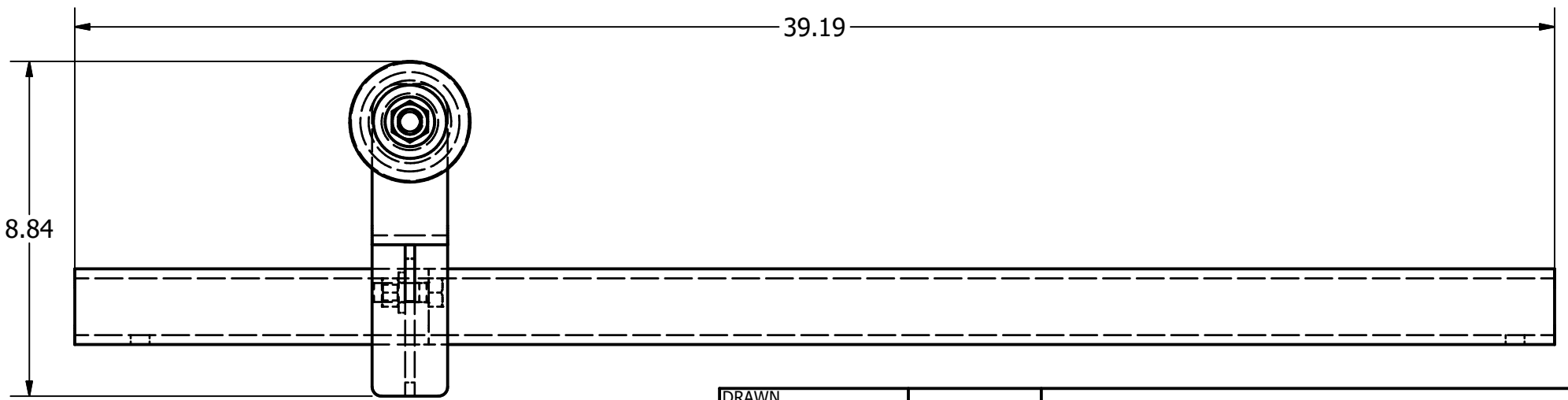
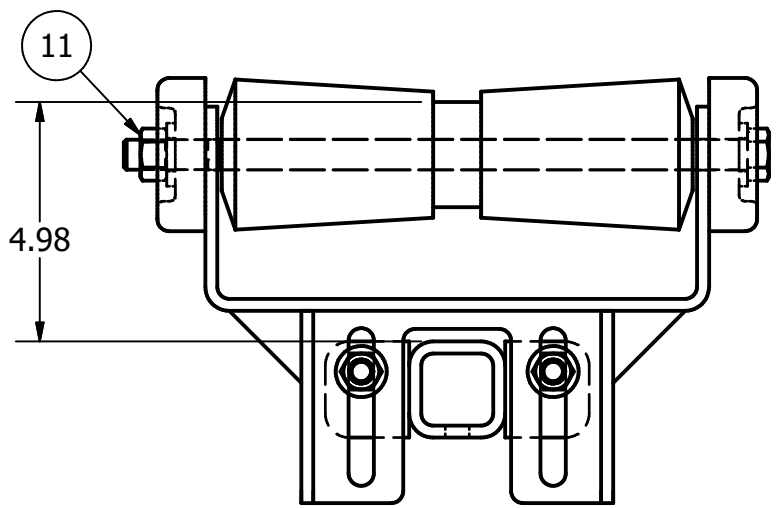
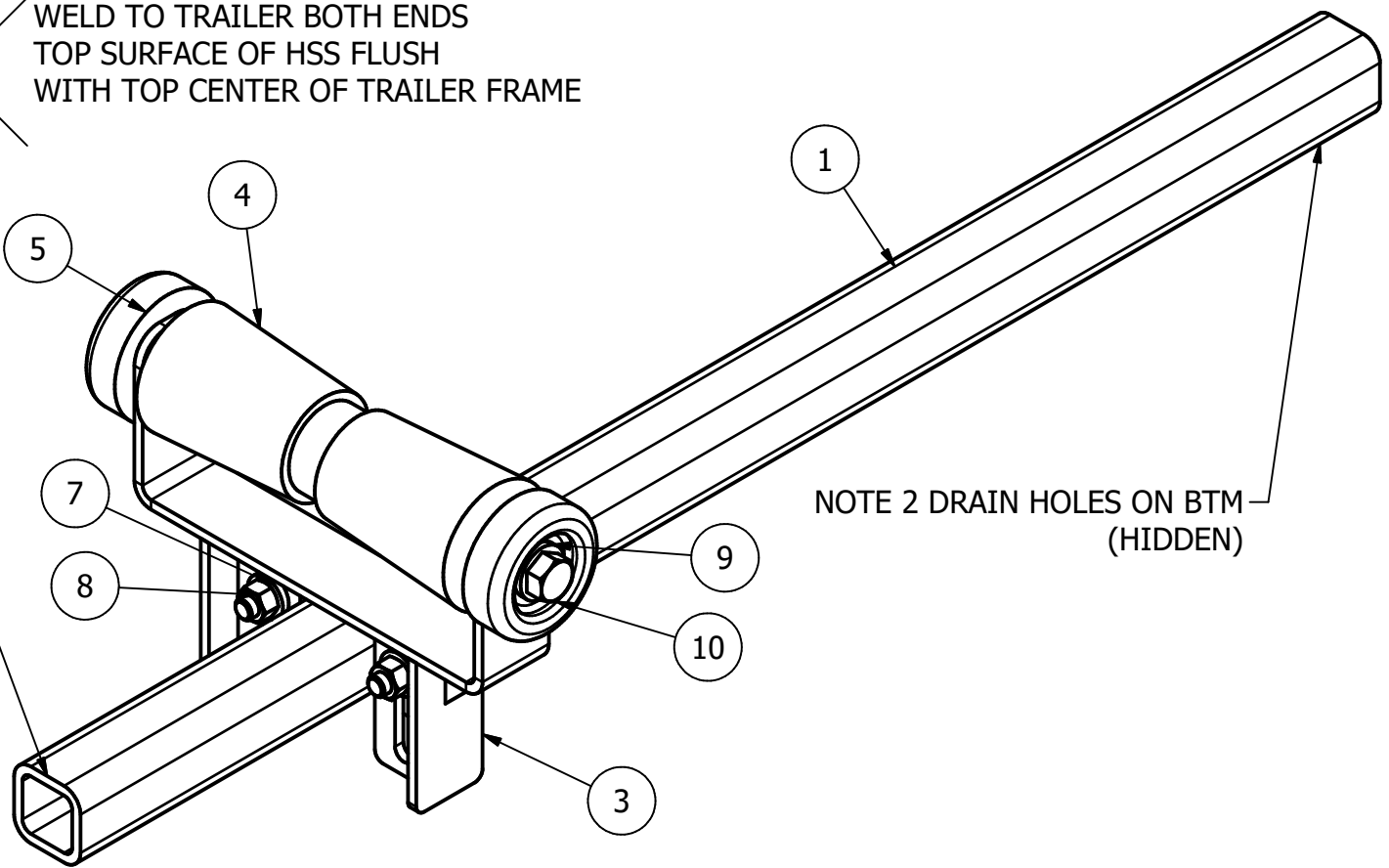
WELD TO TRAILER BOTH ENDS  
TOP SURFACE OF HSS FLUSH  
WITH TOP CENTER OF TRAILER FRAME

1/4

NOTE 2 DRAIN HOLES ON BTM  
(HIDDEN)

PARTS LIST

| ITEM | QTY       | PART NUMBER                               | DESCRIPTION                            |
|------|-----------|---|--|
| 1    | 39.188 in | AISC - 2 x 2 x 1/4 - 39.1875              | Tube                                   |
| 2    | 2         | mounting tab                              |  |
| 3    | 1         | bracket weldment                          |  |
| 4    | 1         | STOLTZ RP-10                              | 10" POLY ROLLER                        |
| 5    | 2         | STOLTZ RP-32                              | SIDE CAPS, ROLLER                      |
| 6    | 2         | ANSI/ASME B18.2.1 - 1/2-13 UNC - 1.5, HBI | Hex Bolt - UNC (Regular Thread - Inch) |
| 7    | 2         | ASTM F436 - 1/2, CW                       | Washer A                               |
| 8    | 2         | ANSI B18.2.2 - 1/2 - 13, HNI              | Hex Nuts (Inch Series) Hex Nut         |
| 9    | 2         | ASTM F436 - 5/8, CW                       | Washer A                               |
| 10   | 1         | ANSI/ASME B18.2.1 - 5/8-11 UNC - 13, HBI  | Hex Bolt - UNC (Regular Thread - Inch) |
| 11   | 1         | ANSI B18.2.2 - 5/8 - 11, HNI              | Hex Nuts (Inch Series) Hex Nut         |



|                |            |                           |                   |          |
|----------------|------------|---------------------------|-------------------|----------|
| DRAWN<br>pauld | 2022-10-15 | ASSEMBLY DETAILS          |                   |          |
| CHECKED        |            |                           |                   |          |
| QA             |            | TITLE                     |                   |          |
| MFG            |            | Assembly - Trailer Roller |                   |          |
| APPROVED       |            | SIZE<br>B                 | DWG NO<br>A001-01 | REV<br>B |
|                |            | SCALE<br>1 / 4            | SHEET 1 OF 2      |          |

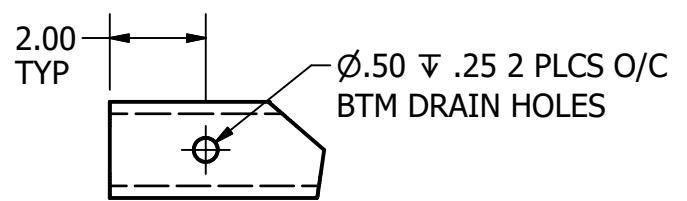
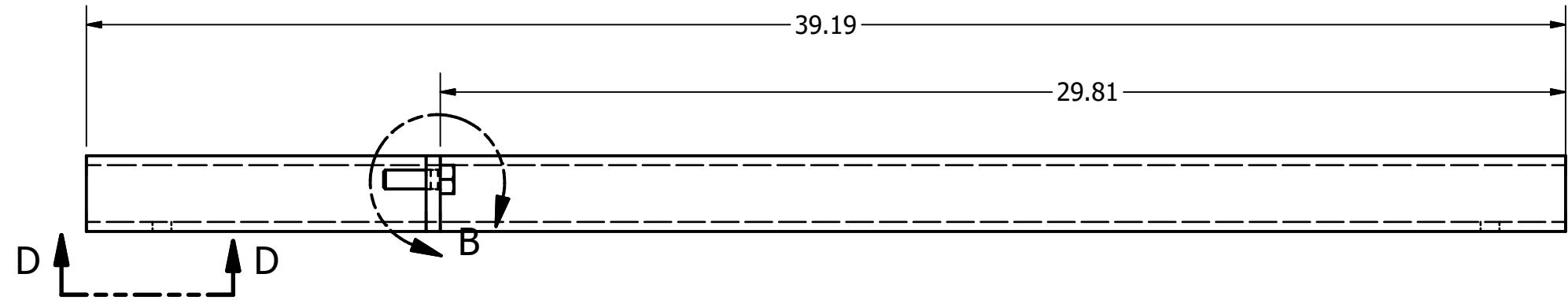
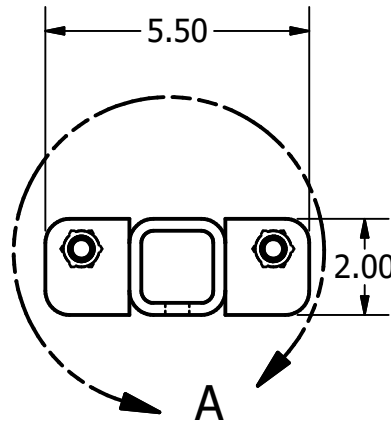
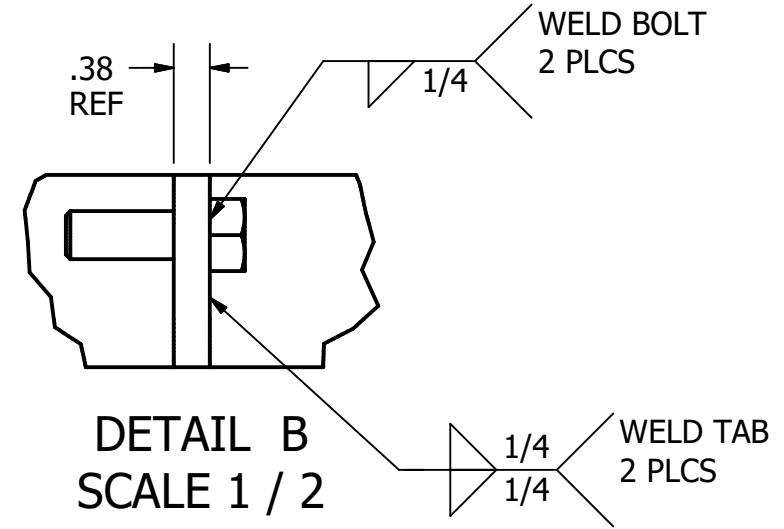
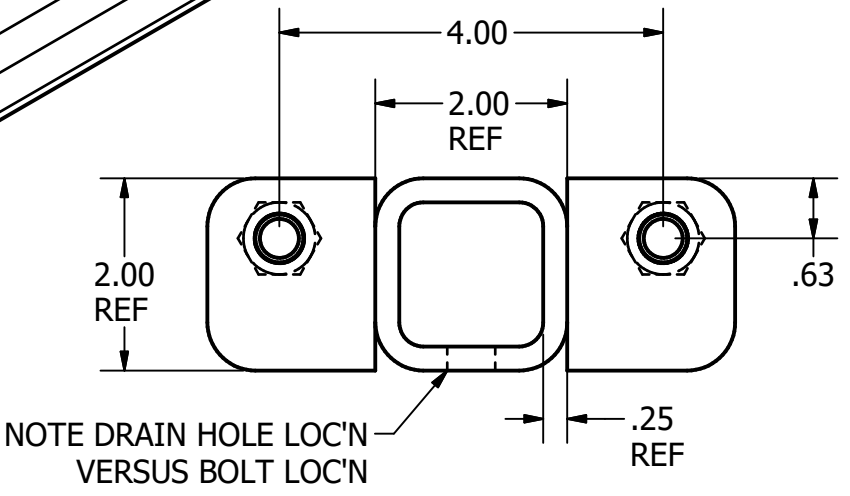
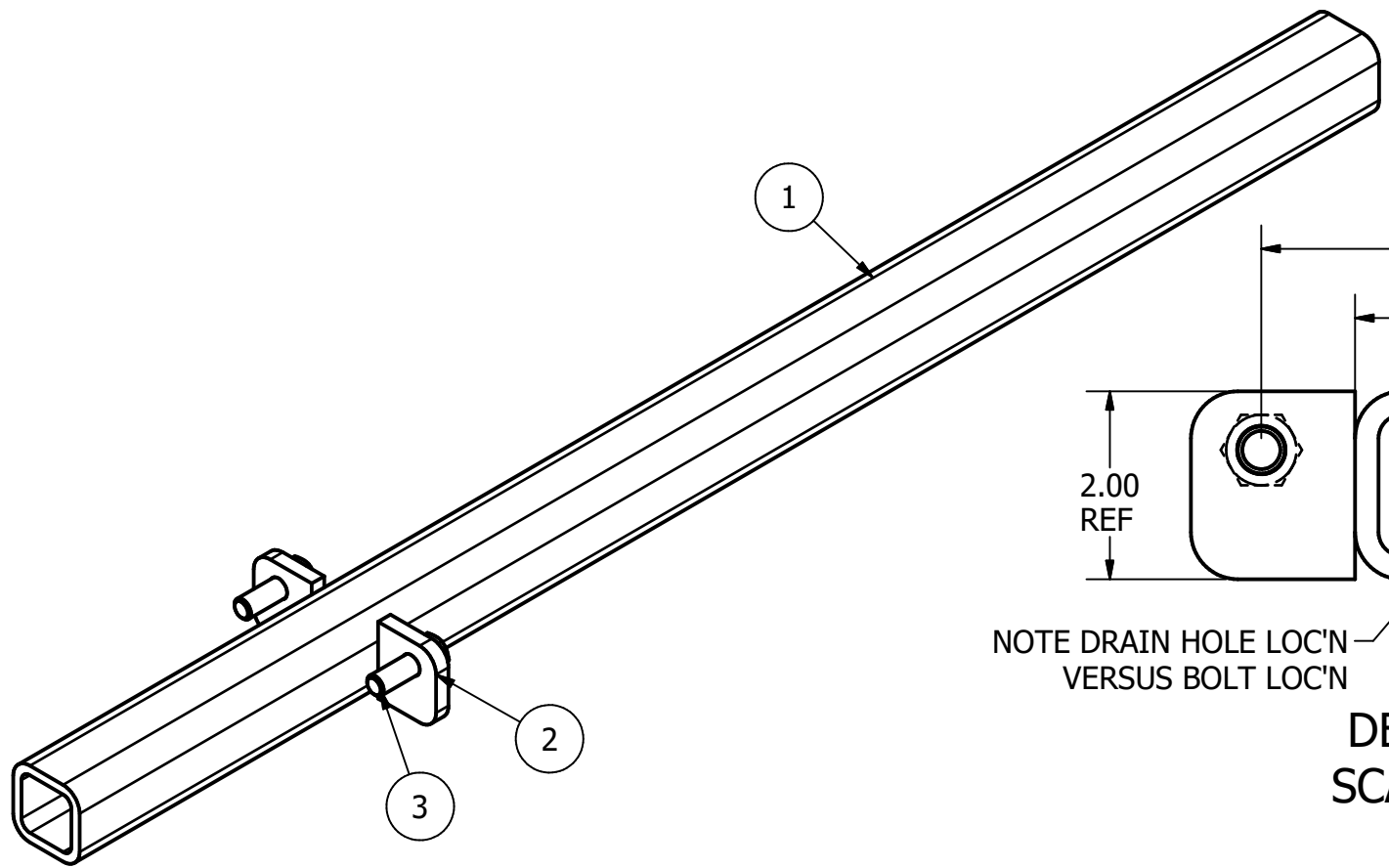
4

3

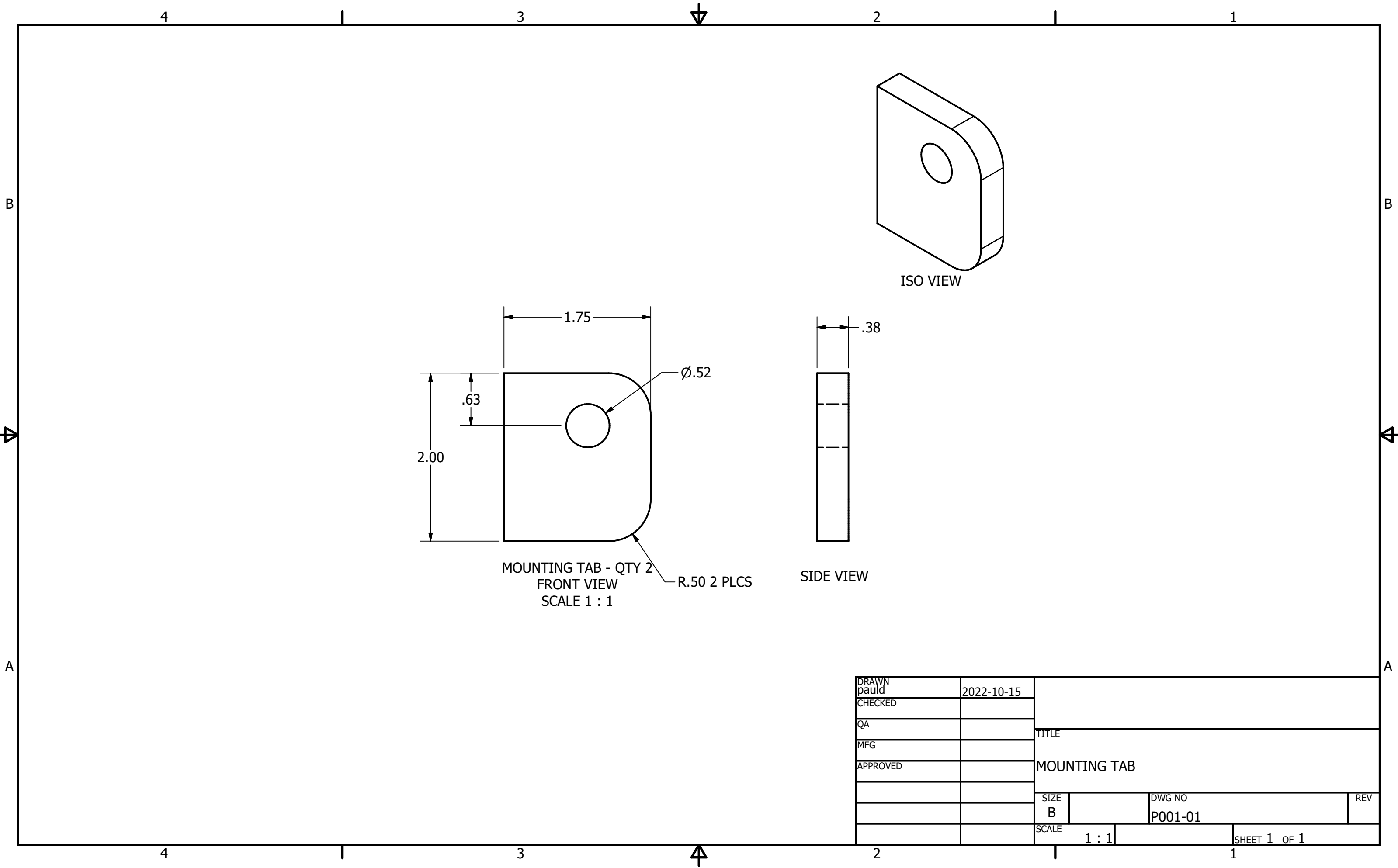
2

1

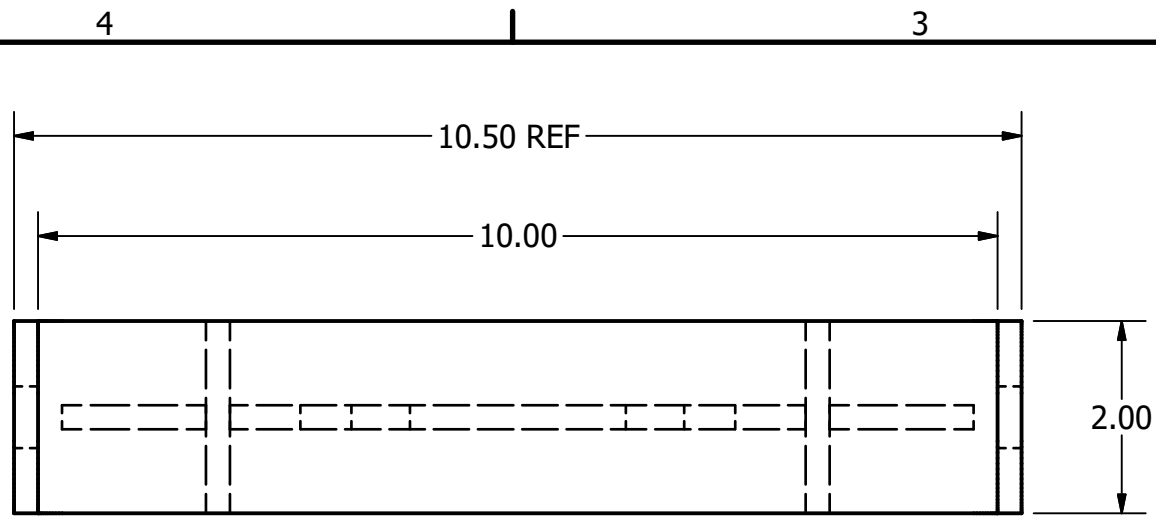
| PARTS LIST |           |   |  |
|------------|-----------|---|--|
| ITEM       | QTY       | PART NUMBER                               | DESCRIPTION                            |
| 1          | 39.188 in | AISC - 2 x 2 x 1/4 - 39.1875              | Tube                                   |
| 2          | 2         | mounting tab                              |  |
| 3          | 2         | ANSI/ASME B18.2.1 - 1/2-13 UNC - 1.5, HBI | Hex Bolt - UNC (Regular Thread - Inch) |



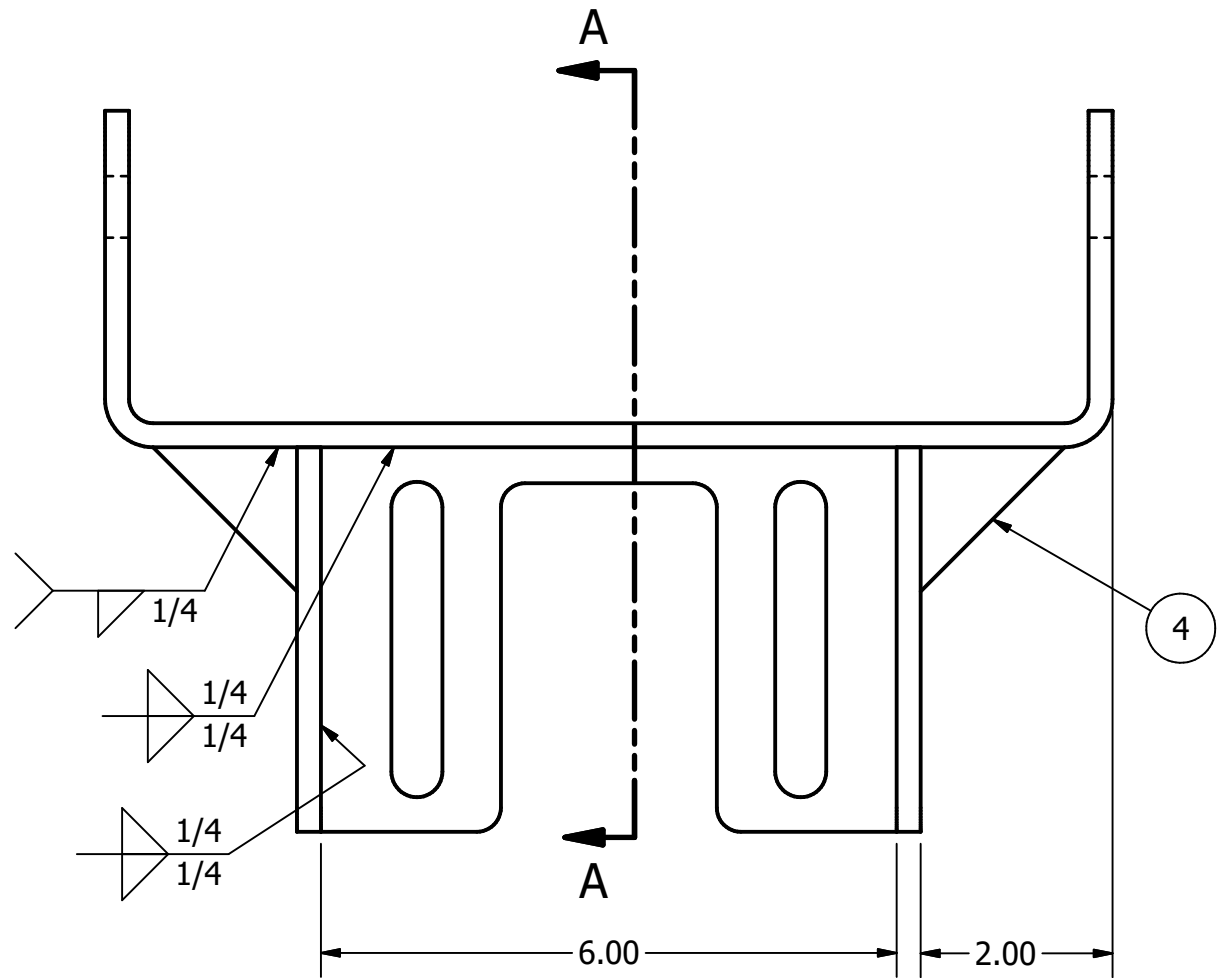
|                |            |                           |                   |
|----------------|------------|---------------------------|-------------------|
| DRAWN<br>pauld | 2022-10-15 | WELDMENT DETAILS          |                   |
| CHECKED        |            |                           |                   |
| QA             |            | TITLE                     |                   |
| MFG            |            | Assembly - Trailer Roller |                   |
| APPROVED       |            | SIZE<br>B                 | DWG NO<br>A001-01 |
|                |            | SCALE<br>1 / 4            | REV<br>B          |
|                |            | SHEET 2 OF 2              |                   |



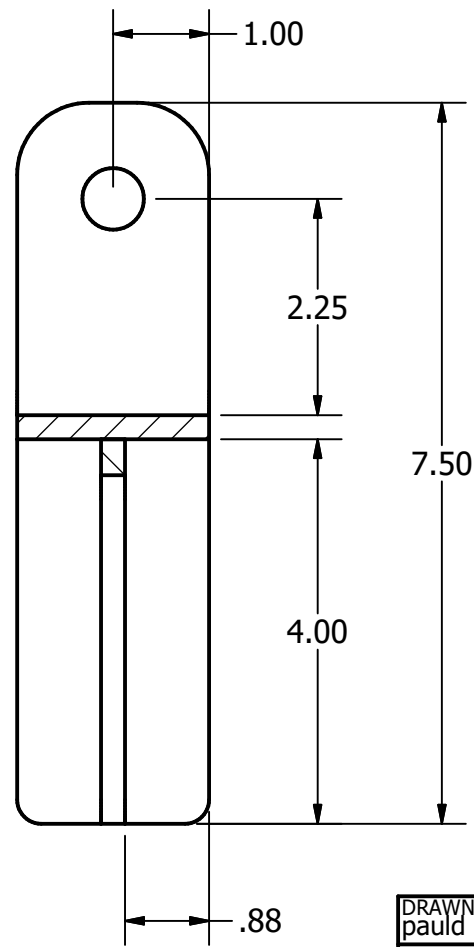
|                |            |              |         |              |
|----------------|------------|--------------|---------|--------------|
| DRAWN<br>pauld | 2022-10-15 |              |         |              |
| CHECKED        |            |              |         |              |
| QA             |            | TITLE        |         |              |
| MFG            |            | MOUNTING TAB |         |              |
| APPROVED       |            | SIZE         | DWG NO  | REV          |
|                |            | B            | P001-01 |              |
|                |            | SCALE        | 1 : 1   | SHEET 1 OF 1 |



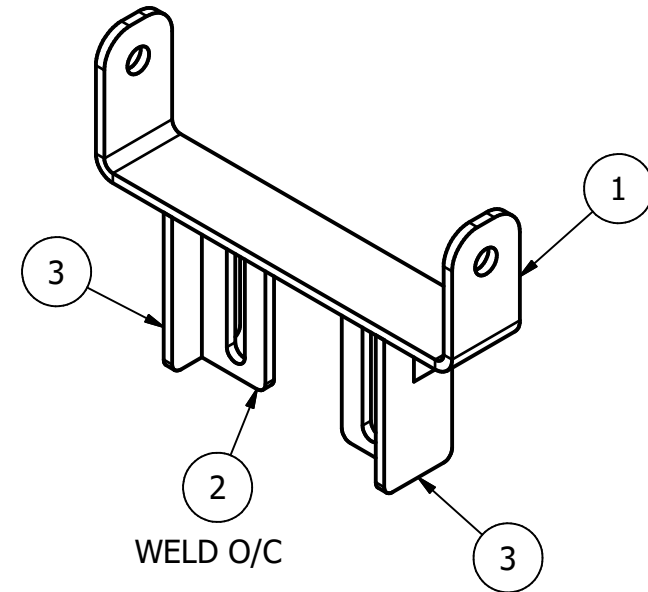
TOP VIEW  
SCALE 1 / 2



FRONT VIEW  
SCALE 1 / 2

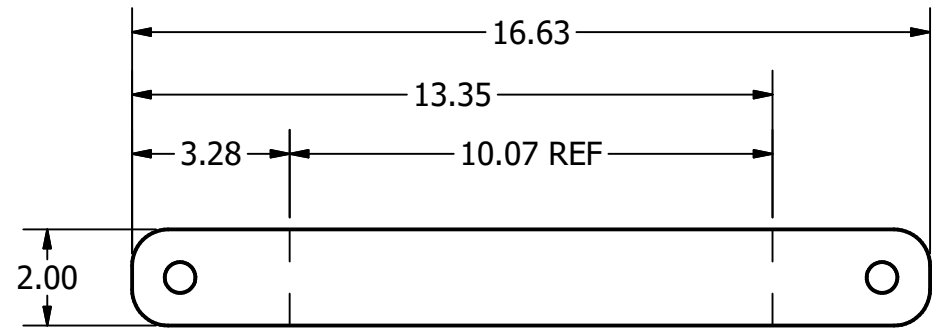


SECTION A-A  
SCALE 1 / 2

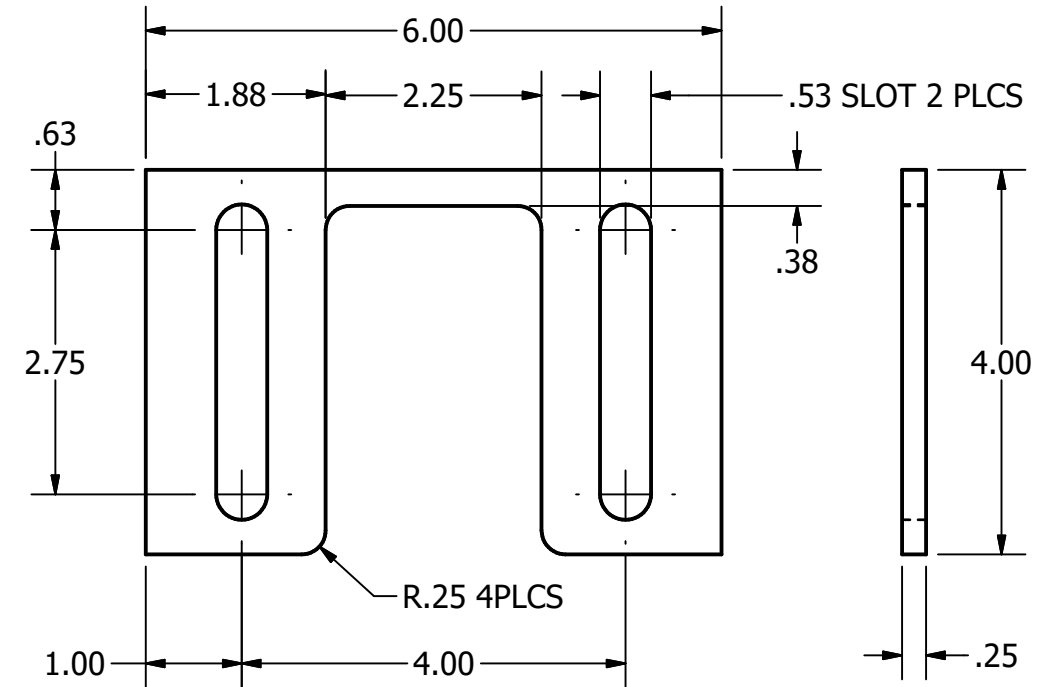


| PARTS LIST |     |                |             |
|------------|-----|----------------|-------------|
| ITEM       | QTY | PART NUMBER    | DESCRIPTION |
| 1          | 1   | roller bracket |             |
| 2          | 1   | slot plate     |             |
| 3          | 2   | side plate     |             |
| 4          | 2   | gusset         |             |

|                |            |                          |                   |          |
|----------------|------------|--------------------------|-------------------|----------|
| DRAWN<br>pauld | 2022-10-15 | WELDMENT DETAILS         |                   |          |
| CHECKED        |            | TITLE                    |                   |          |
| QA             |            | WELDMENT, ROLLER BRACKET |                   |          |
| MFG            |            | SIZE<br>B                | DWG NO<br>W001-01 | REV<br>A |
| APPROVED       |            | SCALE<br>1 / 2           | SHEET 1 OF 3      |          |

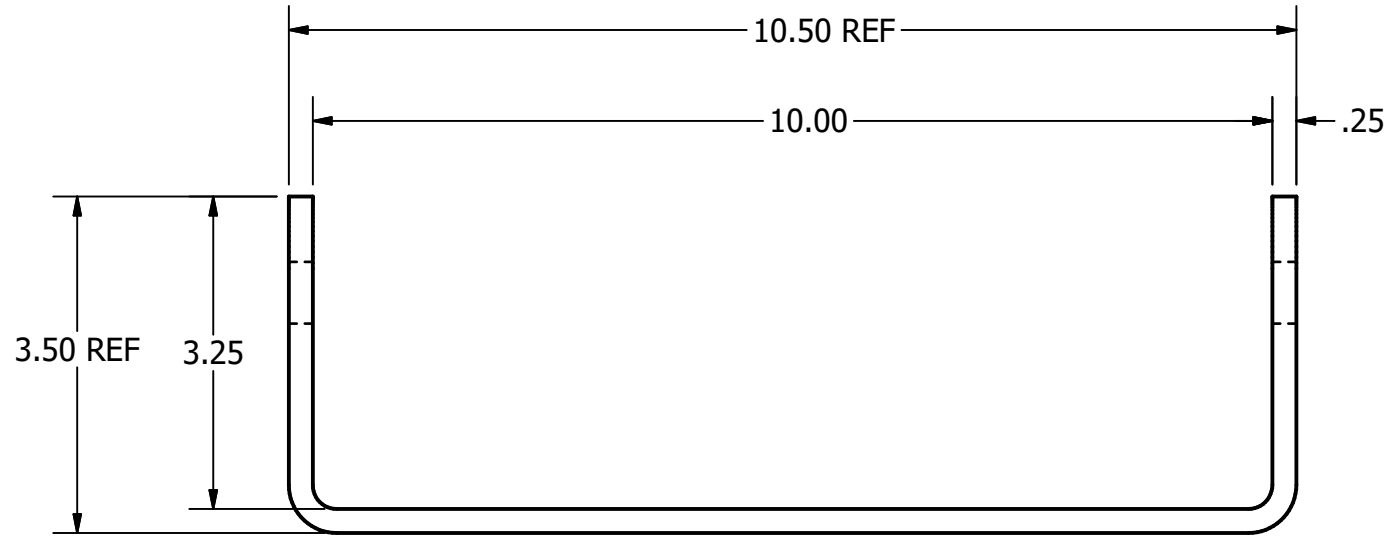


ROLLER BRACKET - FLAT PATTERN  
SCALE 1 / 4

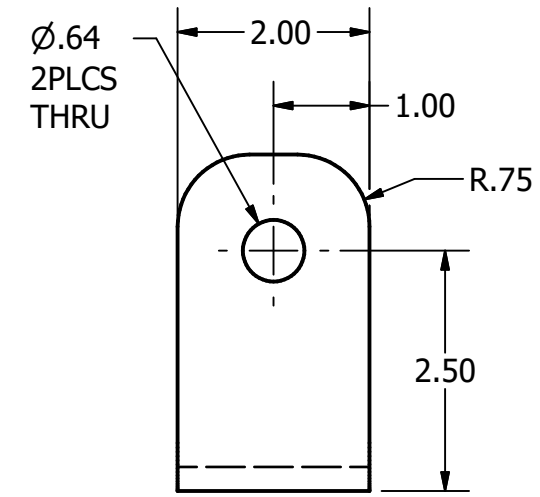


SLOT PLATE - QTY 1  
FRONT VIEW  
SCALE 1 / 2

SIDE VIEW

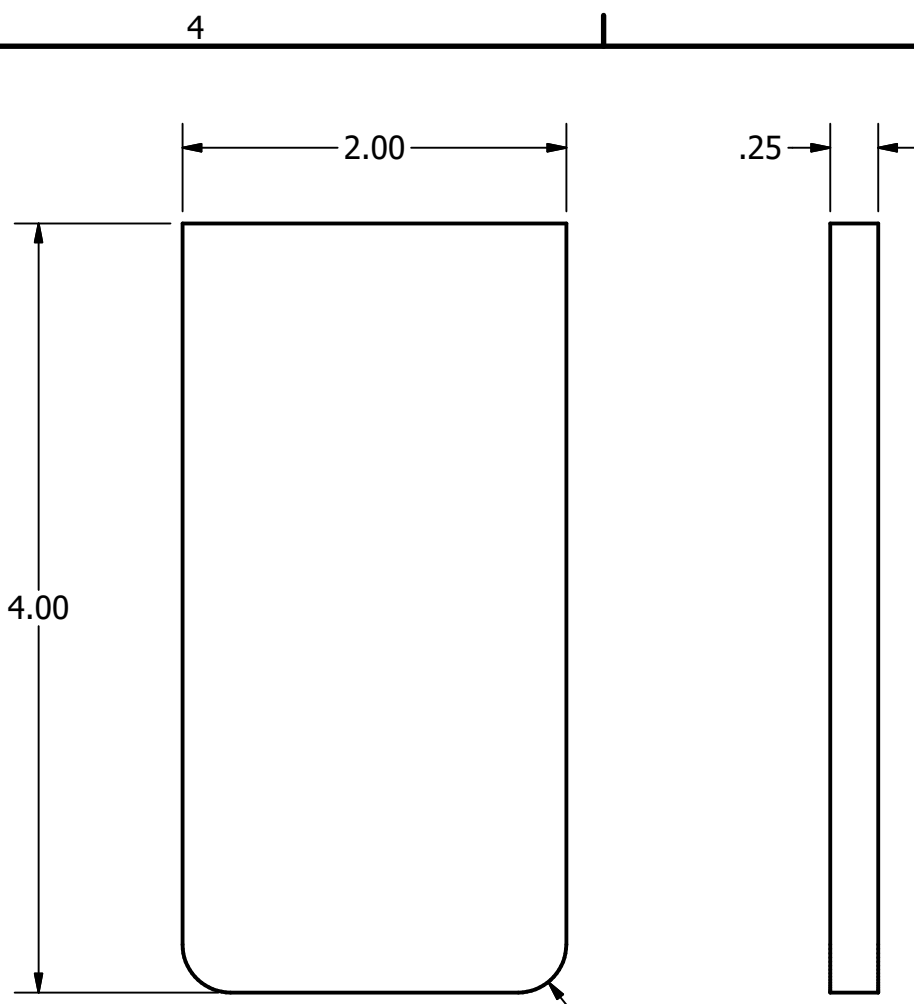


ROLLER BRACKET - QTY 1  
FRONT VIEW  
SCALE 1 / 2

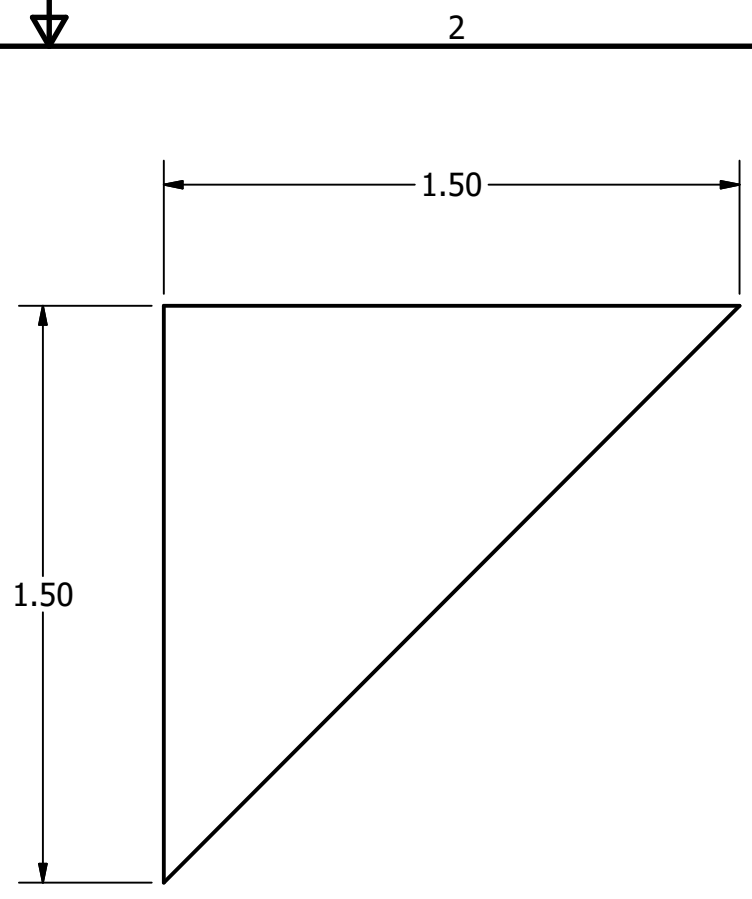


SIDE VIEW

|                |            |                             |                   |          |
|----------------|------------|-----------------------------|-------------------|----------|
| DRAWN<br>pauld | 2022-10-15 | ROLLER BRACKET & SLOT PLATE |                   |          |
| CHECKED        |            | TITLE                       |                   |          |
| QA             |            | WELDMENT, ROLLER BRACKET    |                   |          |
| MFG            |            | SIZE<br>B                   | DWG NO<br>W001-01 | REV<br>A |
| APPROVED       |            | SCALE<br>1 / 2              | SHEET 2 OF 3      |          |



SIDE PLATE - QTY 2  
FRONT VIEW  
SCALE 1 : 1



GUSSET - QTY 2  
FRONT VIEW  
SCALE 2 / 1

|                |            |                          |         |              |
|----------------|------------|--------------------------|---------|--------------|
| DRAWN<br>pauld | 2022-10-15 | SIDE & GUSSET PLATES     |         |              |
| CHECKED        |            | TITLE                    |         |              |
| QA             |            | WELDMENT, ROLLER BRACKET |         |              |
| MFG            |            | SIZE                     | DWG NO  | REV          |
| APPROVED       |            | B                        | W001-01 | A            |
|                |            | SCALE                    | 1 : 1   | SHEET 3 OF 3 |









